

FARIA



5 5 5 (4) 5 4 4 4 3 4 4 (3)
 C c c C c c C c c C g c G g g G g g



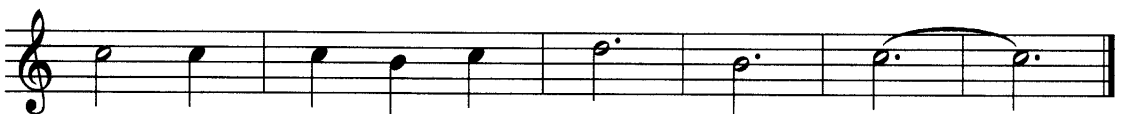
4 4 5 5 5 (4) 5 4 4 4 3 4
 C c c C c c C c c C c c C g c



4 (3) 4 4 6 6 6 6 (4) (4) 5
 G g g G g g C c c C c c F f f F c f C c c



5 5 5 5 (3) 4 (3) 4 4 (3) (3) (3) 5 6
 C c c G g g G g g C c c C c c G g g G g g



6 6 6 6 6 7 6 6 6
 C c c C g c G g g G g g C c c C c c

